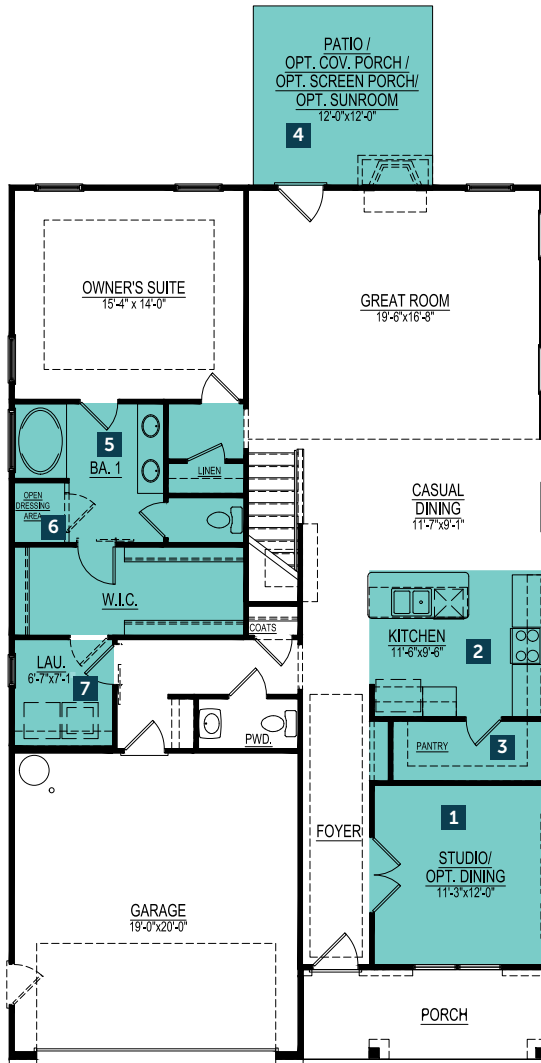


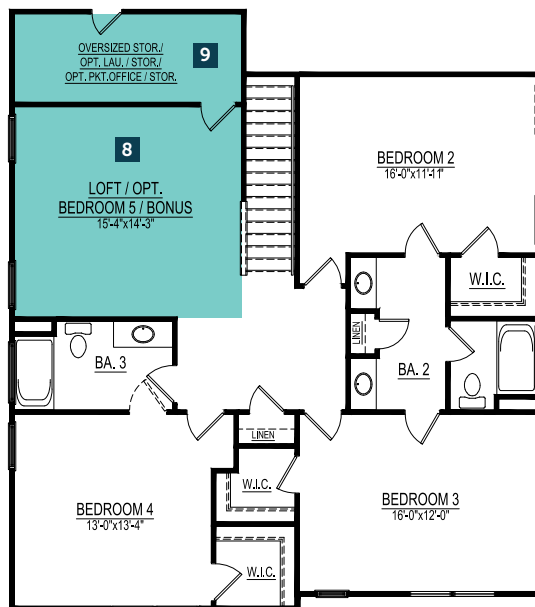
2,976 SF  
4-5 Bedrooms | 3.5 Bath  
Downstairs Owner's Suite



## FIRST FLOOR



## SECOND FLOOR



## THE GOLDENROD

2,976 SF  
4-5 Bedrooms  
3.5 Bath

### FlexPointes®

\*Not all options below are shown on floorplan; additional options available.

**1**

Studio  
Dining

**2**

Island Kitchen  
Peninsula Kitchen  
Opt. Gourmet Kitchen

**3**

Oversized Pantry  
Party Pantry  
Messy Kitchen w/Shelf  
Butler's Pantry  
Opt. Wine Cooler

**4**

Patio  
Covered Patio  
Screened Porch  
Sun Room

**5**

Garden Tub-Shower  
Soaker Tub & Sep. Shower  
Luxury Shower w/Bench

**6**

Private Dressing Area  
Built-in Bench  
Linen Closet  
Vanity

**7**

Laundry  
Stacked Laundry w/Pet Spa  
Opt. Owner's Suite Access

**8**

Open Loft  
Bedroom/Bonus Room

**9**

Storage  
Opt. 2nd Laundry  
Opt. Pocket Office

**Crosspointe**  
HOMES

[www.MyCrosspointeHome.com](http://www.MyCrosspointeHome.com)

Images on this brochure are for illustrative purposes only and are not intended to represent all options and/or features available. Not all options are available on all home sites. In effort of continual improvement, Crosspointe Homes reserves the right to modify and/or change plans, materials, features, colors, specifications without notice.

Please see Sales Representative for complete and current plans, features and options available. Rev. 20200609