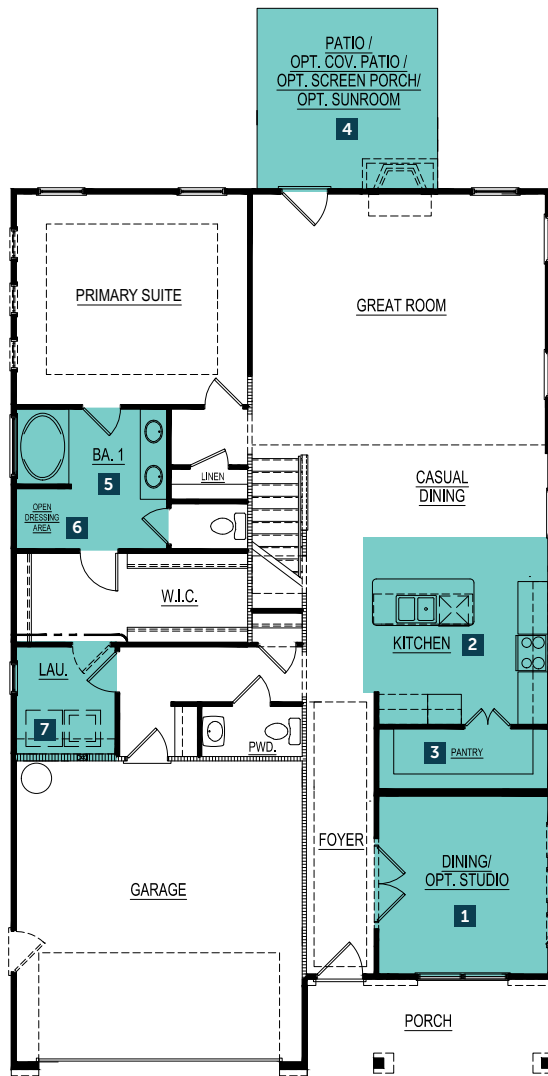




## FIRST FLOOR



## THE GOLDENROD

2,976

4-5 | 3.5

### FlexPointes®

\*Not all options below are shown on floorplan; additional options available.

1

- A. Studio
- B. Dining

2

- A. Island Kitchen
- B. Island Gourmet Kitchen
- C. Peninsula Kitchen
- D. Peninsula Gourmet Kitchen

3

- A. Standard Pantry
- B. Party Pantry
- C. Messy Kitchen
- D. Butler's Pantry

4

- A. Patio
- B. Covered Patio
- C. Screened Porch
- D. Sunroom

5

- A. Garden Tub-Shower
- B. Soaker Tub & Sep. Shower
- C. Luxury Tile Shower w/Bench

6

- A. Dressing Area
- B. Linen Closet
- C. Vanity w/Knee Space

7

- A. Side-by-Side W/D
- B. Laundry w/Pet Spa

8

- A. Open Loft
- B. Bedroom/Bonus Room

9

- A. Oversized Storage
- B. 2nd Laundry & Storage
- C. Pocket Office & Storage
- D. Oversized Loft

**Crosspointe**  
HOMES

www.MyCrosspointeHome.com

## SECOND FLOOR

